

NZ Land Use & Management (NZLUM) — Pilot Map Review

Richard Law

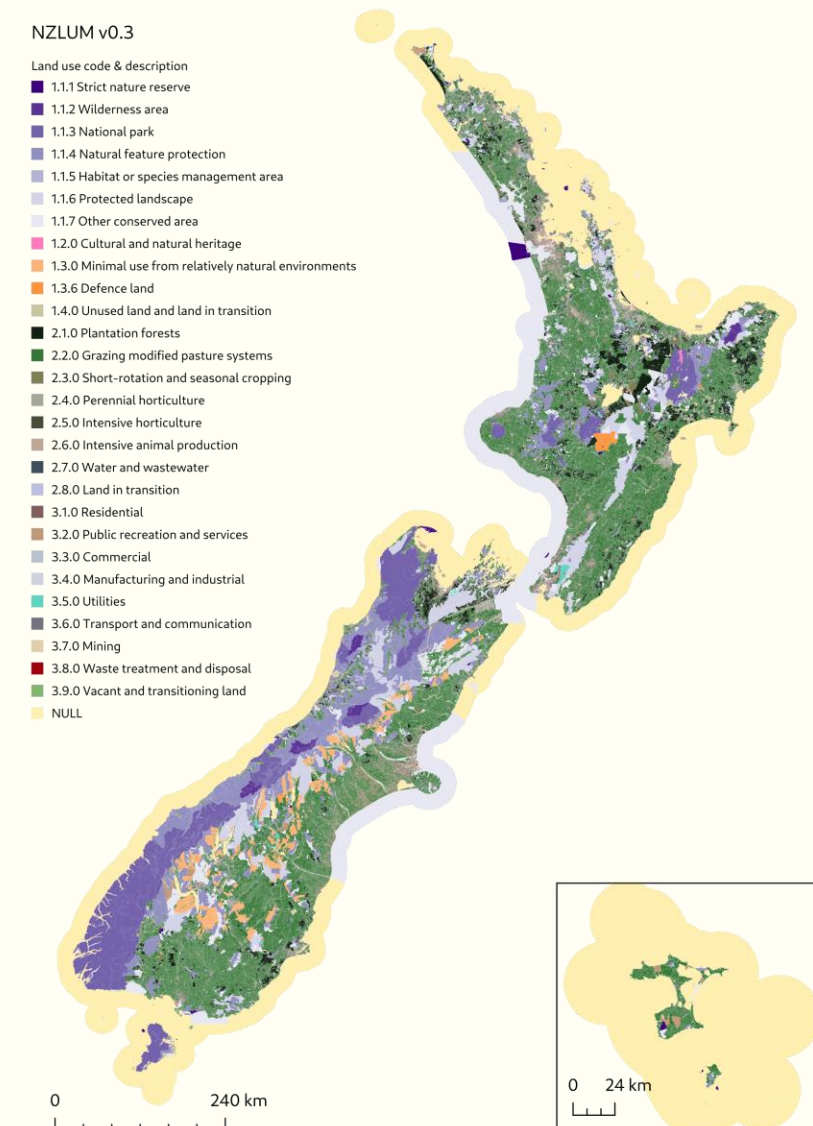
Geospatial Information Systems (GIS) Special Interest Group (SIG)

4 December 2025



Overview

1. Pilot national land use map available to experiment
 - <https://iris.scinfo.org.nz> → "NZLUM v0.3 2025"
 - CC-BY 4.0
 - Protected Areas (PAN-NZ) data available separately (CC-BY)
2. Feedback for the classification system?
3. Do you have more data?
4. Future work for NZLUM v1.0
 - Temporality
 - Revised classification
 - Additional data
 - Māori LU classification



Problem

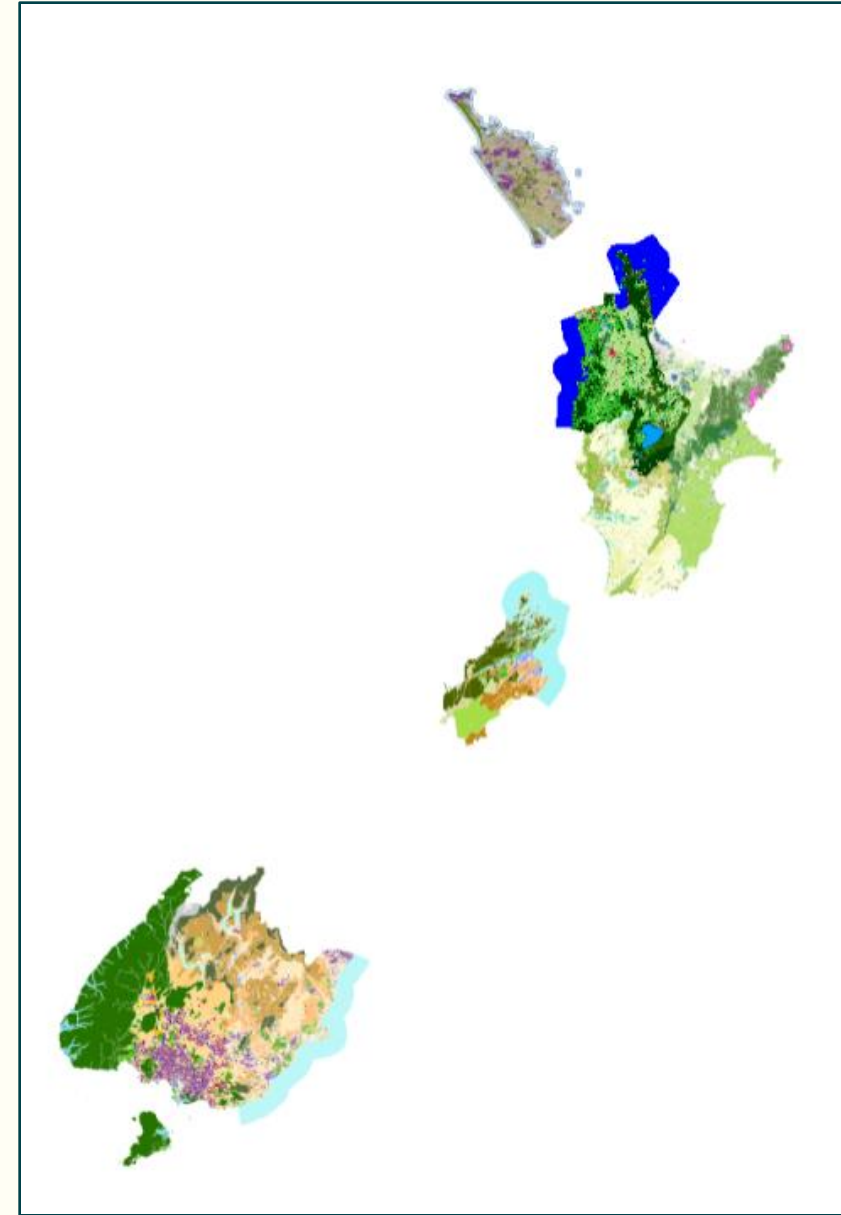


- "The literature reviewed indicates land use information serves an important role in enabling central and local government organisations to meet their regulatory obligations however **there is still no consistent definition of, or approach to land use mapping across New Zealand**, but rather land use mapping approaches continue to vary, reflecting the divergent purposes for which mapping is being undertaken."
- "Research consistently supports the need for greater sharing of land use information, however **practical advances to address these issues have proven difficult** to achieve."
- "There are a variety of **data sets that could be combined to develop a land use database**, however, at present, **access to this information is often difficult**, costly to access, and it currently sits in a variety of formats that may not be compatible."

*Boffa Miskell Limited 2023. **Understanding Land Use Information Requirements**: Ministry for the Environment. Report prepared by Boffa Miskell Limited for Ministry for the Environment: Science Investment*

Regional Land Use Maps

- Ad hoc development
- Made for different purposes
- Inconsistent:
 - Schema
 - Scale
 - Data type
 - Mapping practice
 - Validation
 - Acceptability criteria
 - Visualisation
 - License



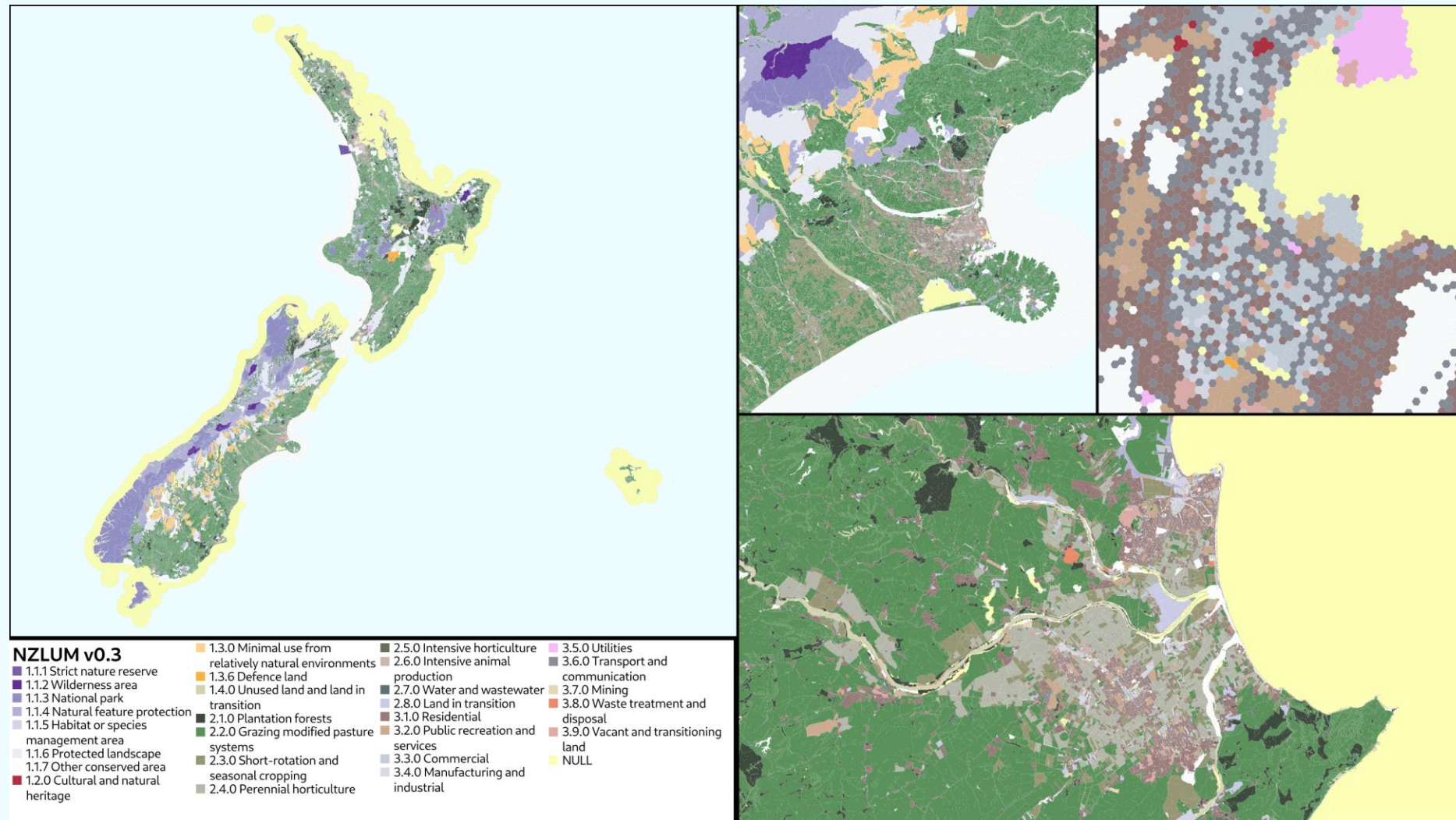
Problem



- Respondents were asked whether a nationally consistent resource of land use information would benefit their organisation. Respondents noted that a national resource could:
 - Provide less background work and analysis required at a regional level
 - Provide greater certainty and comparability nationally
 - Ensure regular updates
 - Allow consistent monitoring
 - Allow organisations to track the change in land use patterns for a range of environmental reporting requirements
 - Provide another service offering for public users
 - Promote new opportunities to generate data and analyses
- When asked about the potential problems with the creation of a national dataset of land use classification, respondents stated:
 - Whether funding would be sufficient to ensure a regular and meaningful update frequency
 - Will require other data sources which are often restricted (rather than just satellite imagery)
 - Different uses for land use information require different groupings/breakdowns/detail of specific use classes
 - Where the dataset could be reliable

Boffa Miskell Limited 2023. **Understanding Land Use Information Requirements**: Ministry for the Environment. Report prepared by Boffa Miskell Limited for Ministry for the Environment: Science Investment

Pilot solution: NZLUM v0.3 2025 — Map



NZLUM v0.3 — Taxonomy (implemented)



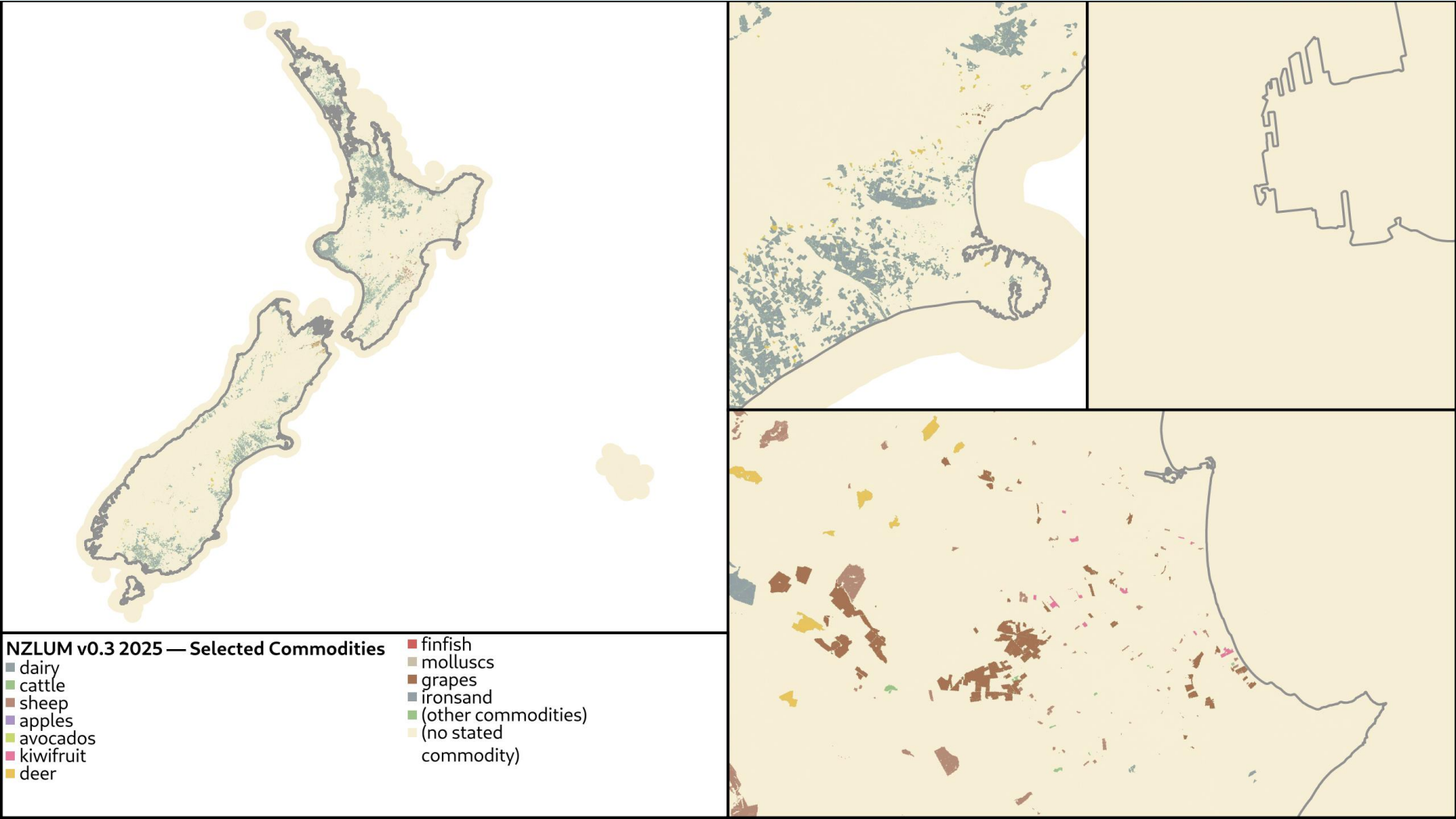
| 1 | Conservation and minimal use of natural environments | 2 | Production agriculture and plantations | 3 | Built environment |
|-------|--|-------|--|-------|--------------------------------|
| 1.1.0 | Nature Conservation | 2.1.0 | Plantation forests | 3.1.0 | Residential |
| 1.1.1 | Strict nature reserve | | | | |
| 1.1.2 | Wilderness area | 2.2.0 | Grazing modified pasture systems | 3.2.0 | Public recreation and services |
| 1.1.3 | National park | | | | |
| 1.1.4 | Natural feature protection | 2.3.0 | Short-rotation and seasonal cropping | 3.3.0 | Commercial |
| 1.1.5 | Habitat or species management area | | | | |
| 1.1.6 | Protected landscape | 2.4.0 | Perennial horticulture | 3.4.0 | Manufacturing and industrial |
| 1.1.7 | Other conserved area | | | | |
| | | 2.5.0 | Intensive horticulture | 3.5.0 | Utilities |
| 1.2.0 | Cultural and natural heritage | | | | |
| | | 2.6.0 | Intensive animal production | 3.6.0 | Transport and communication |
| 1.3.0 | Minimal use from relatively natural environments | | | | |
| 1.3.6 | Defence land | 2.7.0 | Water and wastewater | 3.7.0 | Mining |
| | | | | | |
| 1.4.0 | Unused land and land in transition | 2.8.0 | Land in transition | 3.8.0 | Waste treatment and disposal |
| | | | | | |
| | | | | 3.9.0 | Vacant and transitioning land |

NZLUM v0.3 — Data Schema

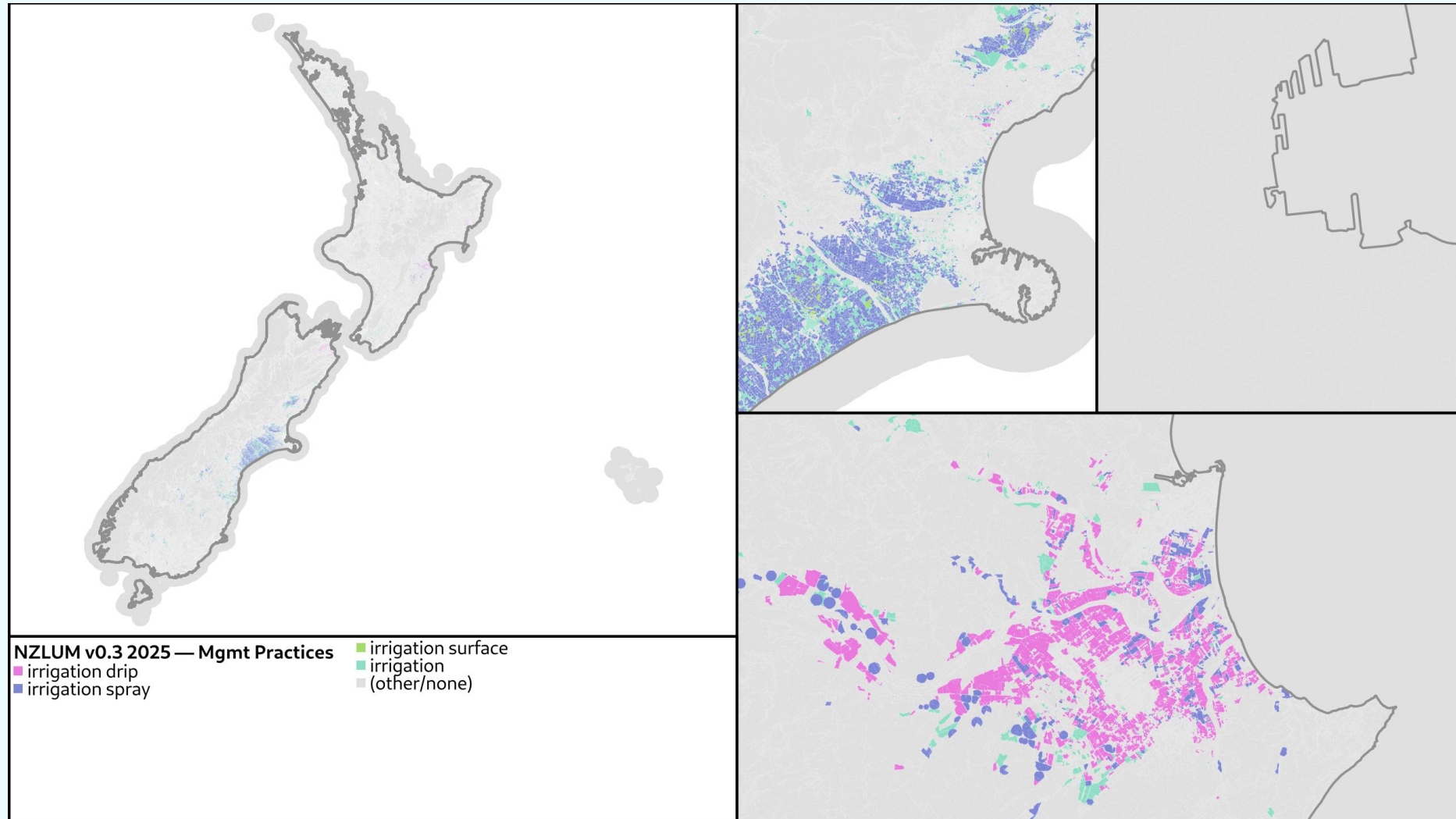


| attribute | type | example | notes |
|-------------------|---------------------------|-------------------------------|---|
| lu_code_primary | integer | 1 | Numerical land use code (primary use) at the primary level |
| lu_code_secondary | integer | 2 | Numerical land use code (primary use) at the secondary level |
| lu_code_tertiary | integer | 3 | Numerical land use code (primary use) at the tertiary level |
| lu_code | string | 1.2.3 | Complete land use code (primary use) |
| lu_description | string | Natural Heritage | Land use class label (primary use) |
| lu_code_ancillary | (sorted set of) string | 2.2.0,3.2.1 | Land use code (ancillary uses), multiple uses are to be specified with comma separation with optional whitespace characters |
| commod | (sorted set of) string | cattle dairy | Commodity type; multiple commodities are to be specified with comma separation with optional whitespace characters |
| commod_ancillary | (sorted set of) string | pulpwood | Commodity type(s) relating to the ancillary land use code(s) |
| manage | (sorted set of) string | irrigation spray,organic | Management practices; multiple practices are to be specified with comma separation with optional whitespace characters |
| manage_ancillary | string | free standing | Management practices relating to the ancillary use code(s) |
| land_estate | string | freehold | Estate type |
| land_status | string | [TBD] | Land status type (public-private continuum; terminology to be determined) |
| water | string | lake | Water type (null for non-water) |
| zone | string | Large format retail zone | District plan zone; terminology to be taken from the Zone Framework Standard (National Planning Standards, 2019) |
| permeability | string | sealed | Permeability type (sealed or unsealed) |
| confidence | integer | 3 | Confidence 1-4, a qualitative assessment relating to the overall operator confidence in the assigned classification |
| luc_date | date | 2024-05-26 | Date of land use classification, "last modified" |
| source_data | (sorted set of) string | DVR,NRC,LC08 v5,field mapping | Primary source data (e.g. field mapping, local knowledge, ancillary dataset, air photo, imagery). Often, multiple sources of information are combined to come to a conclusion; to a reasonable extent, all should be specified. |
| source_data_doi | (set of) uri | doi:10.26908/W5B4-WK93 | Optional (i.e. when available) DOI or HTTP URI for source data |
| source_date | string (date range) | [2011-05-02,2025-01-03] | Combined date range of spatial features (e.g. image date, ancillary photo date, last edited date) in primary source data, at feature (preferentially) or dataset level, using interval notation for inclusive and exclusive endpoints |
| source_scale | string (integer interval) | [10,60] | Combined integer (interval)[https://en.wikipedia.org/wiki/Interval_(mathematics)] indicating the precision of source data, in the CRS units (metres) |

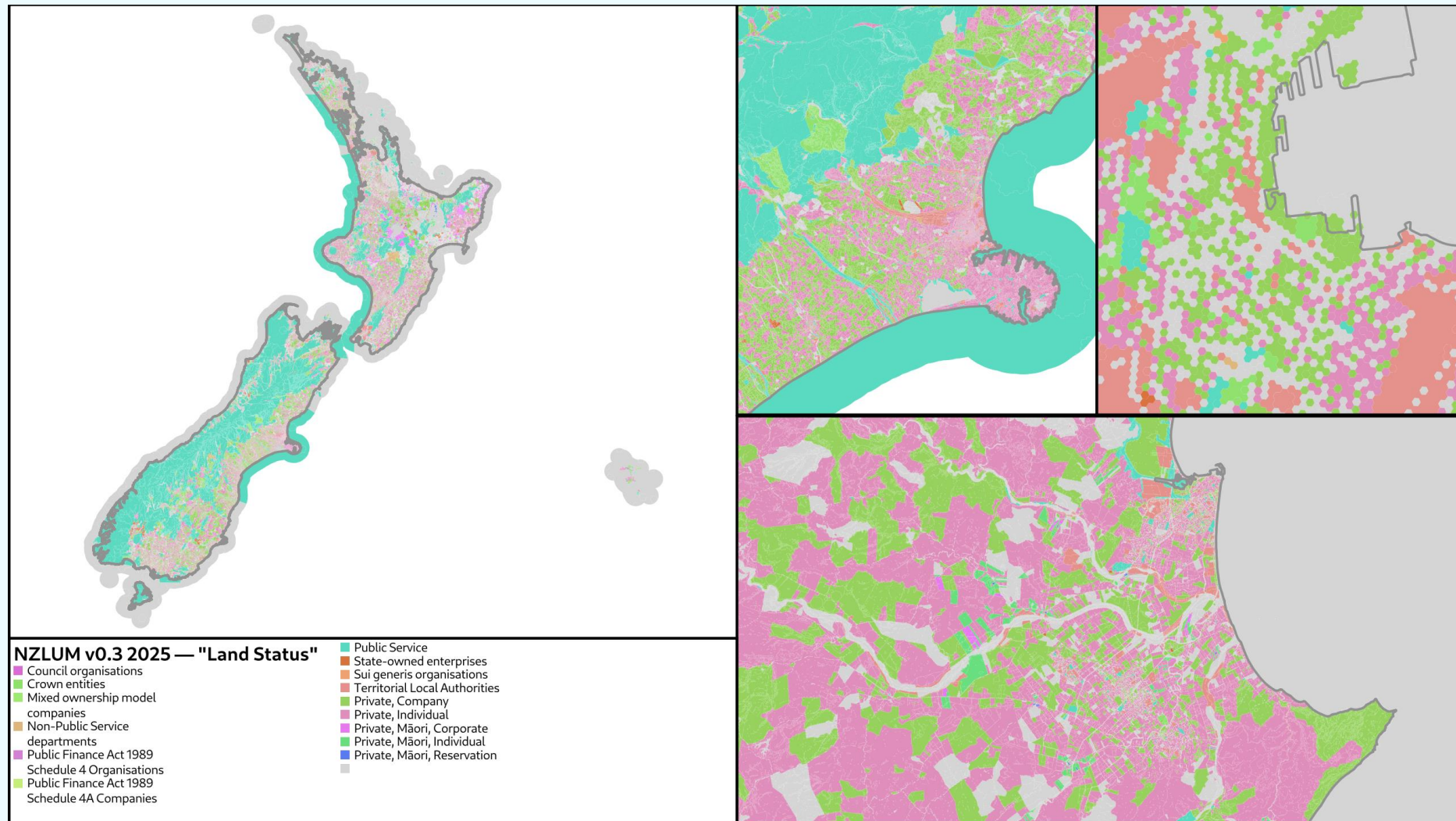
NZLUM v0.3 — Attributes (commodities)



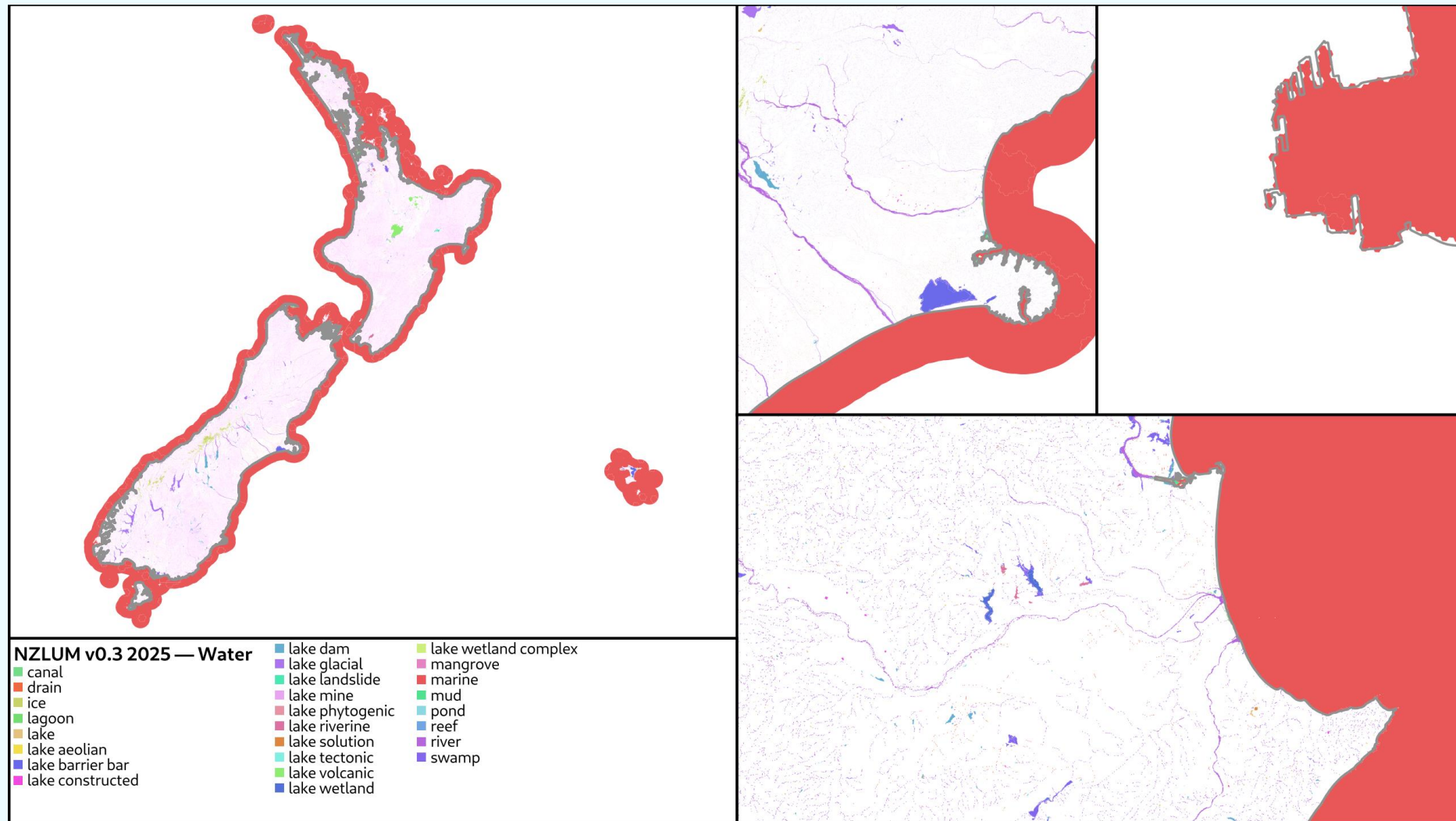
NZLUM v0.3 — Attributes (management practices)



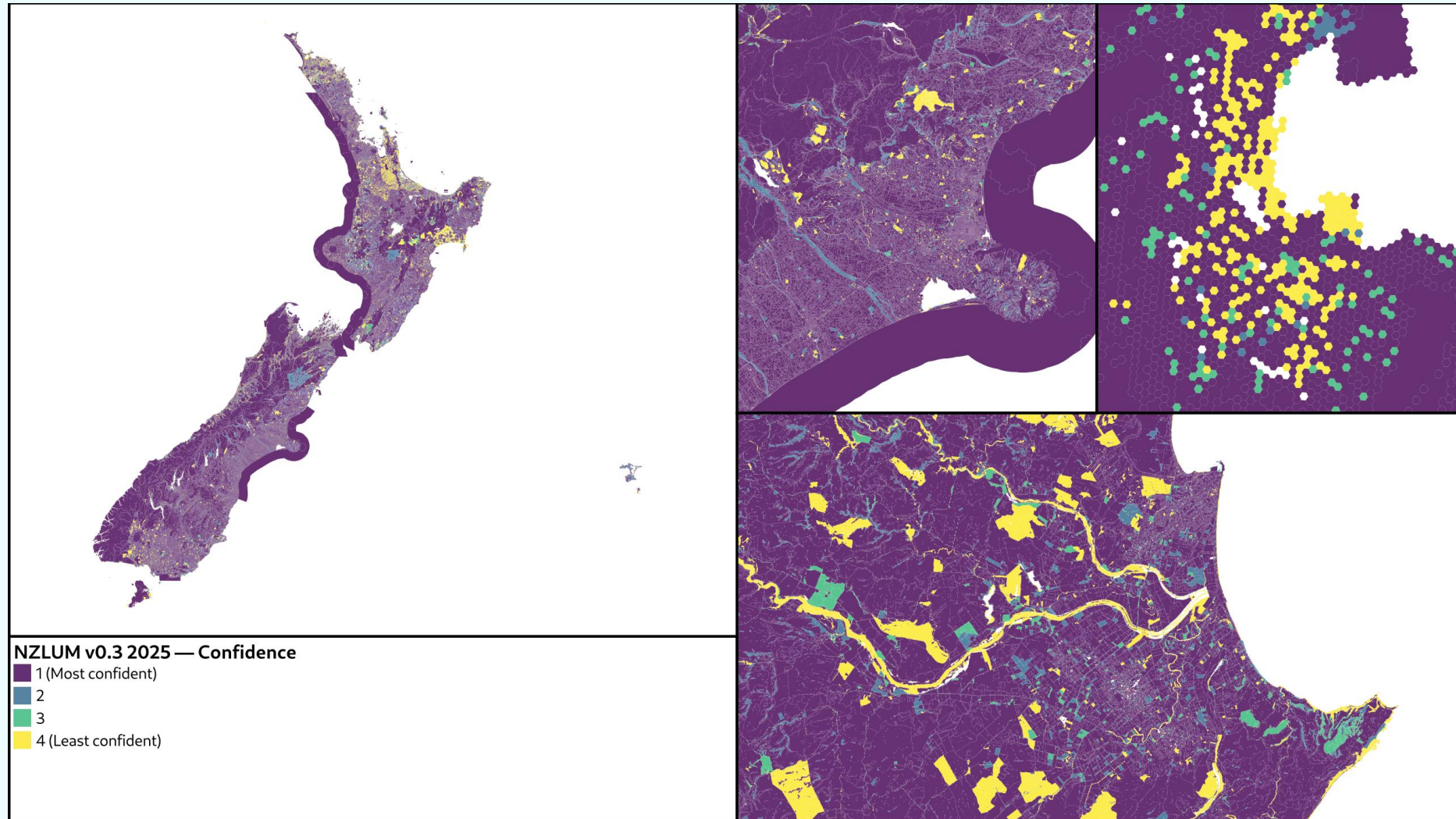
NZLUM v0.3 — Attributes (tenure)



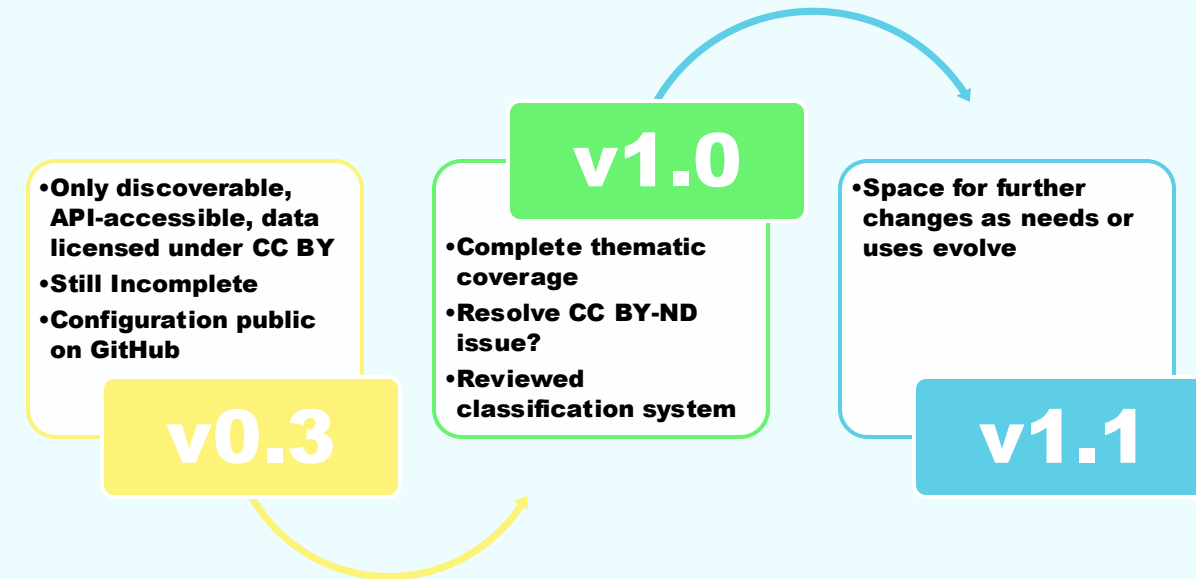
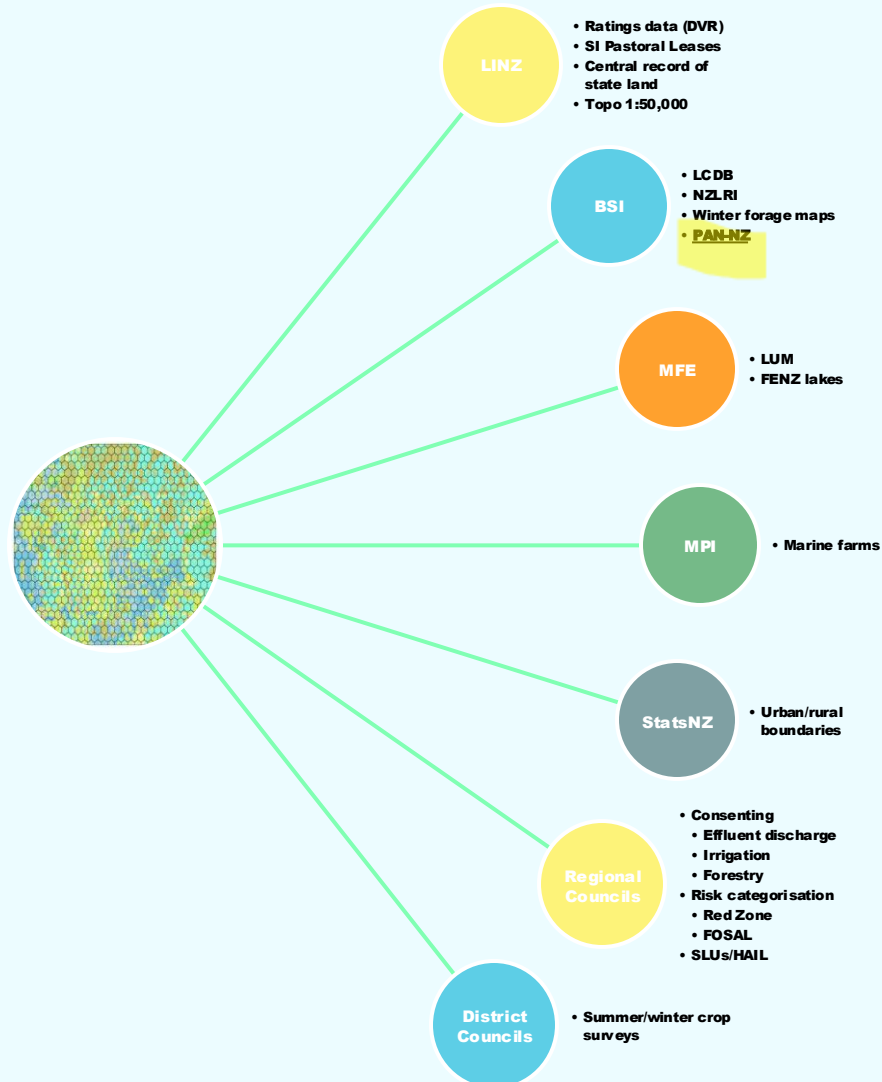
NZLUM v0.3 — Attributes (water)



NZLUM v0.3 — Meta attributes (confidence)

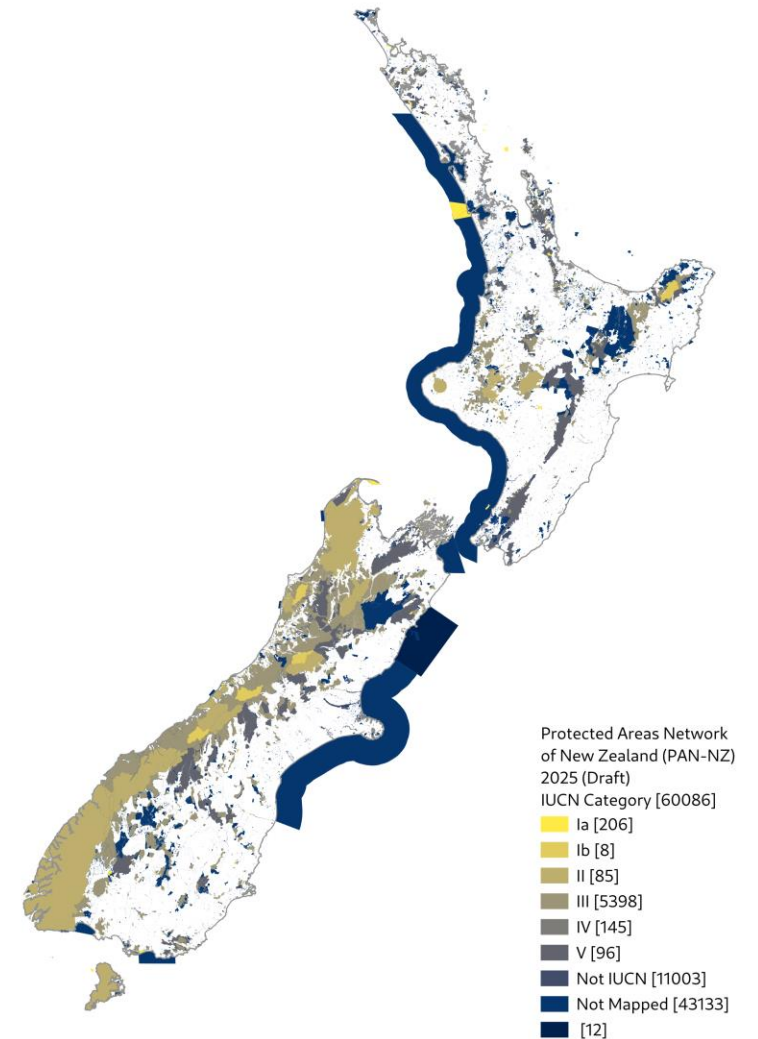


NZLUM v0.3 2025 — Data Sources

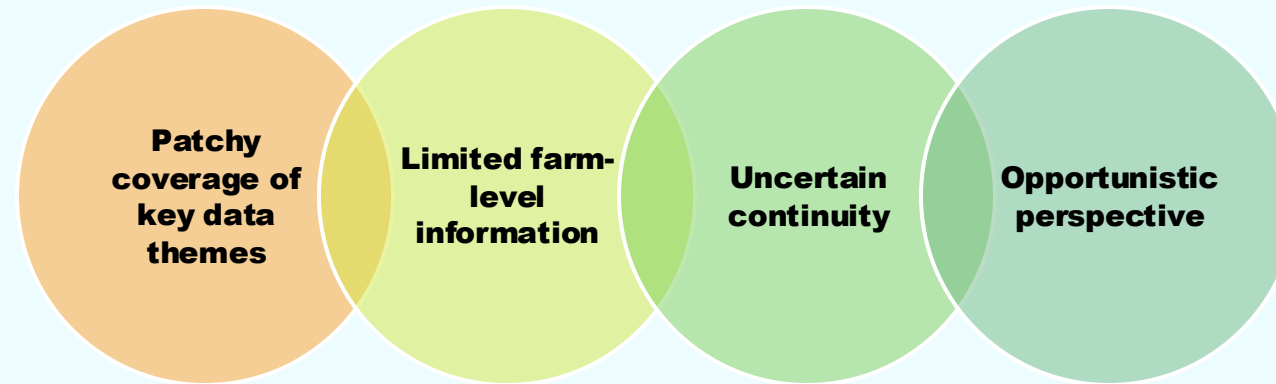


Protected Areas Network of New Zealand (PAN-NZ) 2025 (Draft)

- PAN-NZ is hidden as one input to the land-use map, but it is a standalone dataset built with an additional 8 national, and 156 sub-national datasets.
- We are also looking for more protected areas data.
- Retains original/official boundaries.
- Data catalogue and guidelines website:



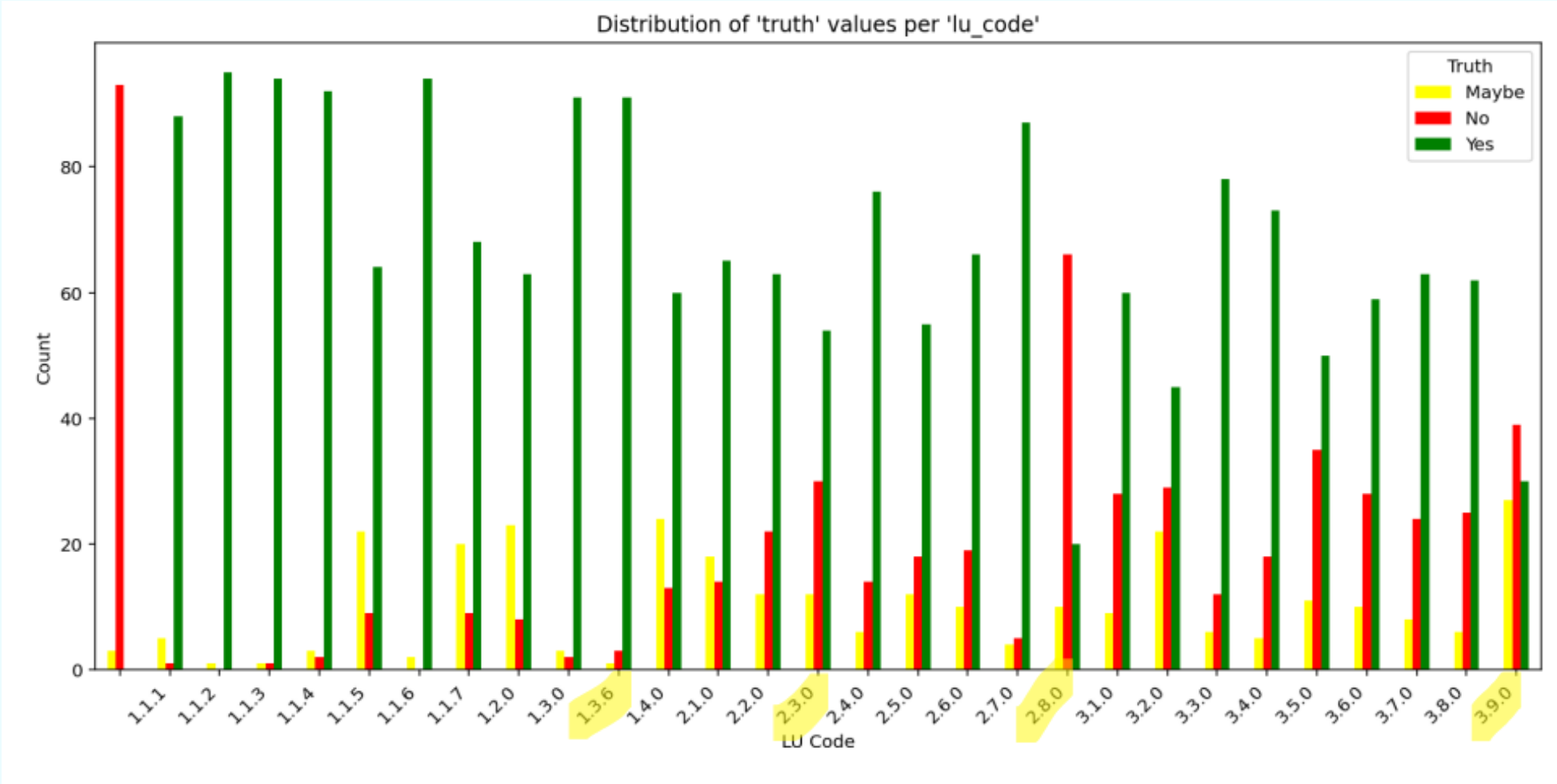
Challenge: Missing data



Challenge: Inconsistent data



Validation Results



Feedback



LRISPORTAL

Manaki Whenua
Landcare Research

More information services

https://lris.scinfo.org.nz/layer/122805-new-zealand-land-use...


Landcare Research
via LRIS Portal

New Zealand Land Use Management
version 0.3 (NZLUM v0.3)

Contact LRIS Portal
Send a message to the publisher of this dataset.

Map

Info History Services and APIs



Data Type

Polygon Layer, 173.6K Polygons

Date Added

Last Updated

Views

Exports

Layer ID

+ 13 Aug 2025

🕒 25 Aug 2025

👁 177

↓ 8

📄 122805

A land-use map of New Zealand, at a nominal date of June 2025. The classification system used is the New Zealand Land Use and Management (NZLUM v0.3), defined under the New Zealand Standard Land Use Classification (NZSLUC) framework.

For more information, see:

- Classification framework ([NZSLUC](#))
- Classification system ([NZLUM](#))
- Contract reports linked to this record in LRIS, which describe the methodology, and validation results
- Consider the contact points listed in the metadata record

(NB: this should not be confused with LUCAS LUM, which is a distinct land cover product.)

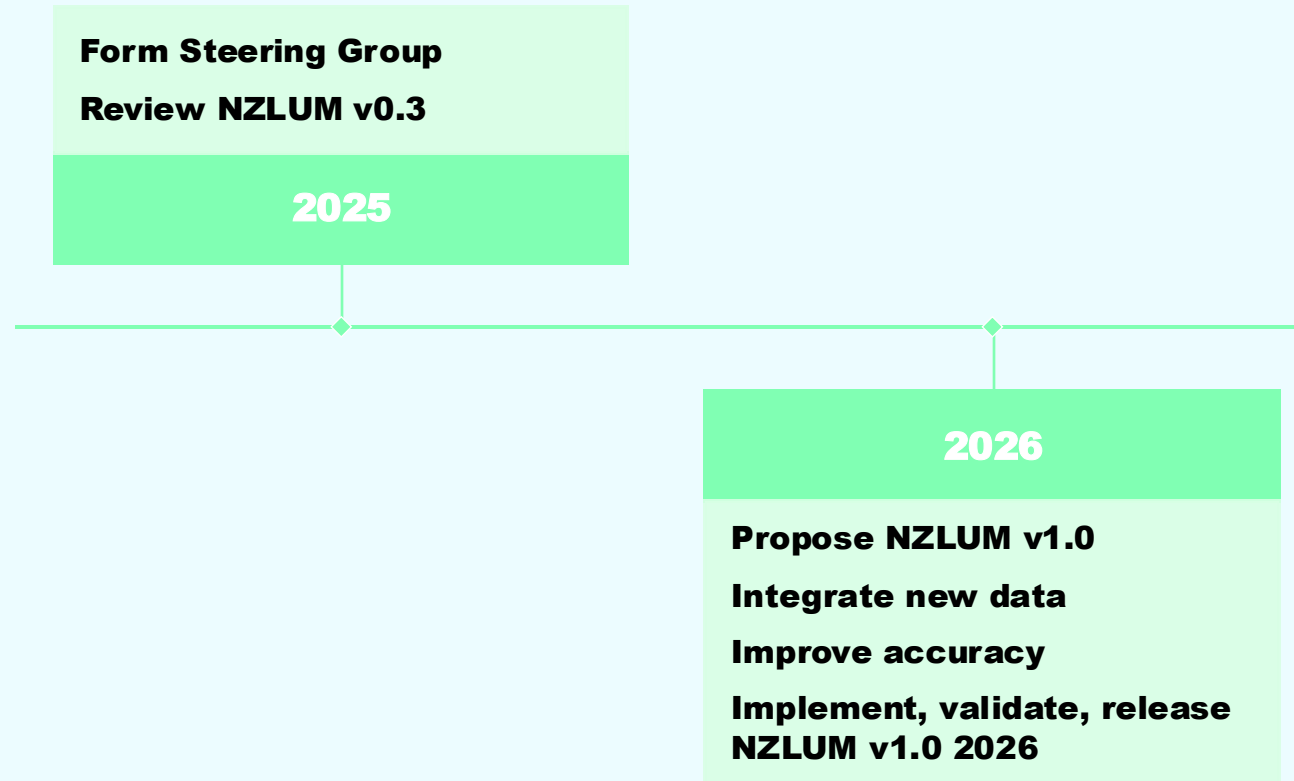
This is a pilot implementation of NZLUM, which aimed to complete classification to the second level of the classification hierarchy, with the exception of legally protected land and defence land, which were described at the third level.

Interactive map & survey



Tell us what you think!

Next steps



Work in parallel



**Better land-
use
information**

**Māori land-use
classification
needs**

**Tracking
changes to
input data**

**ML
classification**

**More
authoritative
data**

<https://nzlum.landcareresearch.co.nz/>



Thank you